

Special Supplement Part II

The **AWAKENING**

“Does Scientific Evidence Support the Existence of a Divine Creator?”

The Flawed Theory of Evolution

FACT: Although science has developed a vernacular, which include words like *gradualism*, *punctuated equilibrium*, *cladogenesis*, *adaptive radiation* and *successive speciation*, — terms used to suggest that the human specie came on the scene in degrees or incremental steps — scientific evidence clearly shows that the oldest human found was 100% human; not part human and part something else.

**INDISPUTABLE
CONCLUSION:**

The first human was . . .



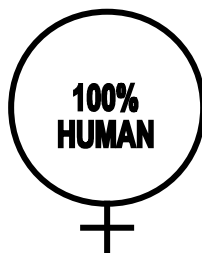
FACT: Assuming the first human was *not* created, then the first human had to be born, since there is no other way it could have arrived.

INDISPUTABLE CONCLUSION: The first human was born.

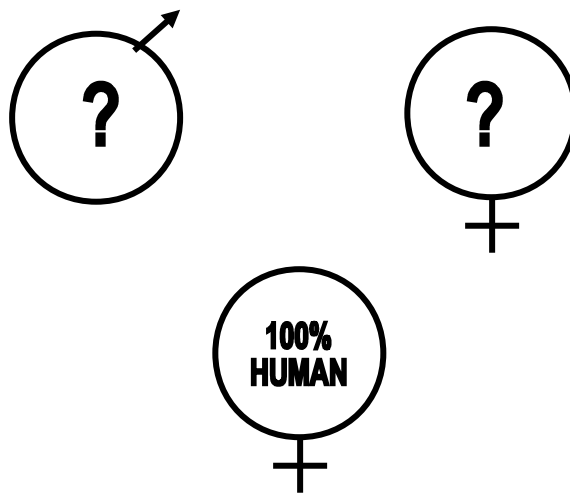


FACT: Since the first human was born as 100% human, then it had to be either male or female. Let's assume it was female.

INDISPUTABLE CONCLUSION: The first human was of a specific gender.

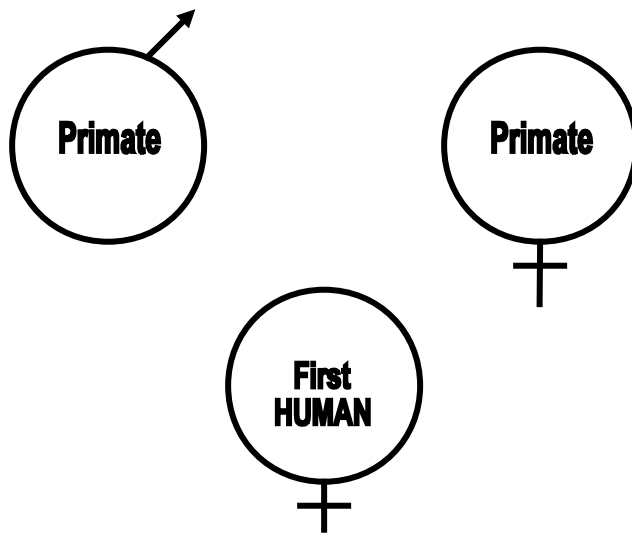


FACT: If evolution is true, a species that was *not* human gave birth to the first human.



INDISPUTABLE The first human had two birth parents,
CONCLUSION: one male, the other female.

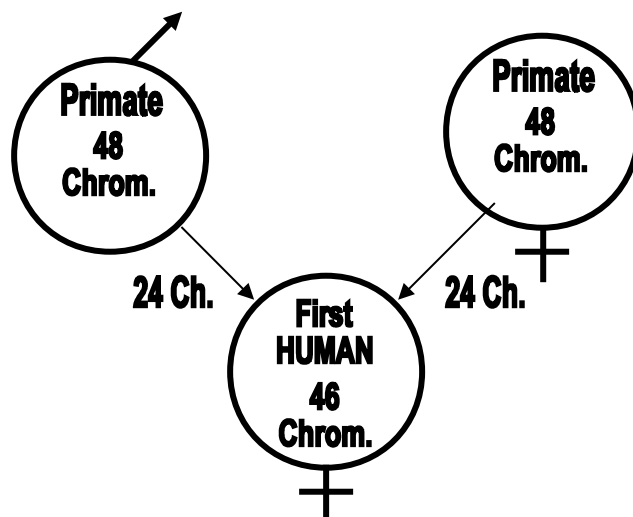
FACT: Science claims that Humans and Chimpanzees share a common ancestor from six million years ago, which explains the 97% commonality in our DNA.



INDISPUTABLE If evolution is true, the first human's birth
CONCLUSION: parents were primates.

FACT: All physical traits are passed to the next generation through the chromosomes of the parents in sets of two. The chromosomes carry the genes, which determine all physical traits, as well as the sex of the offspring.

All primates have 48 chromosomes, so each parent would pass 24 chromosomes, giving the young a total of 48 chromosomes just like the parents. **But this presents a problem.**

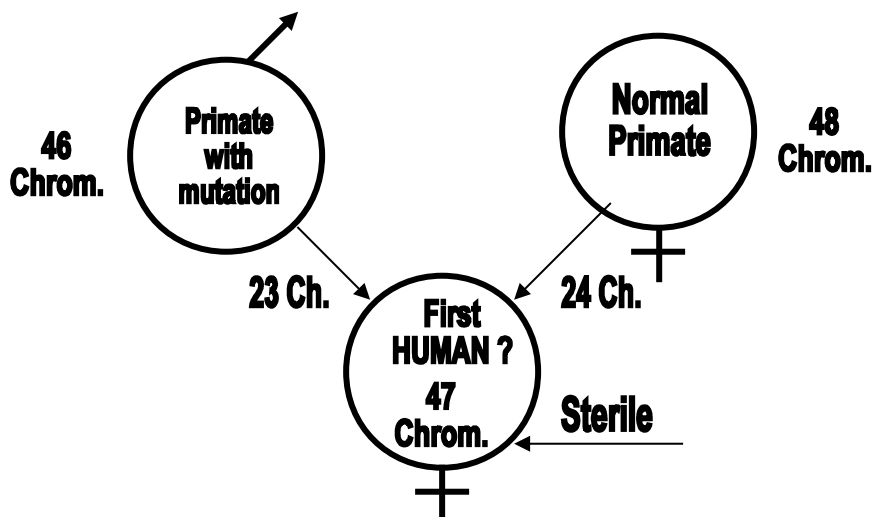


INDISPUTABLE Humans have 46 chromosomes, *not* 48
CONCLUSION: chromosomes, which proves we did not evolve from primates.

The Theory of Chromosomal Fusion

This is science's latest attempt to patch The Theory of Evolution, in order to make it appear feasible.

FACT: Scientists recently noticed a similarity between the human chromosome #2 and two of the Chimp's other chromosomes. They concluded that the first human was a result of a mutation, which fused two of early primate's chromosomes together and resulted in the human chromosome #2. By reducing the chromosome count by one set, or two chromosomes, it would bring the primate's chromosome count to 46, that of a human.



INDISPUTABLE CONCLUSION: Offspring who receive incomplete sets of chromosomes are born sterile and cannot reproduce.

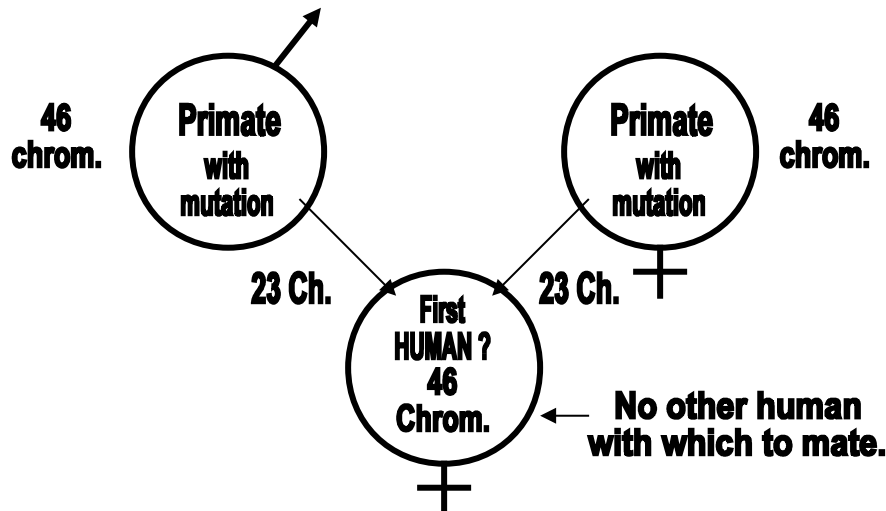
Proof: All mules are born sterile with 63 chromosomes (Horse 64, Donkey 62)

*New Supposition
for the Theory of Chromosomal Fusion*
Suppose two primates with the exact same mutation
(46 chromosomes) produced an offspring.

FACT: What are the odds...

- that such a mutation is possible at all?
- that the affected primate would survive to adulthood?
(mutations are abnormalities)
- that the identical mutation could happen to a second primate? (needed to produce an offspring)
- that the second exact mutation would happen to a primate of the opposite sex?
- that both primates would be in the same generation?
- that out of the entire primate population, these particular primates with exact mutations would meet up and have an offspring together?

But let's suppose it did happen.

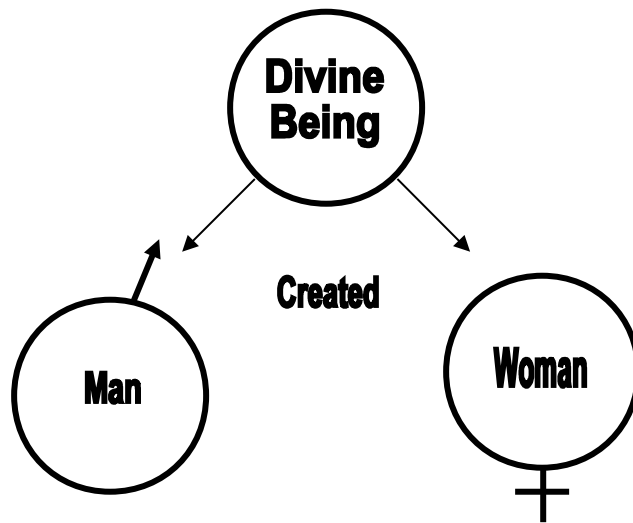


INDISPUTABLE Theory Failure! Only like species will mate.

CONCLUSION: Example: Even though all primates have 48 chromosomes, chimps will only mate with other chimps, orangutans with other orangutans.

*The Only Other Possibility
for Our Existence*

FACT: A very simple law of nature renders evolution impossible. Life requires both male and female to unite in coitus, to produce an offspring of like kind. This fact is stated sixteen times in the book of Genesis, “after its own kind.”



Additional Proof:

- Scientific evidence supports creationism, not evolution. Evidence shows that each plant and animal specie appeared suddenly on earth, and remained constant until either becoming extinct or continuing to this day.
- The cells of all primates contain an acid known as Neu5gc, which the human immune system attacks when introduced. This is why the body always rejects transplanted tissue from primate to human.
- There are increasingly fewer species on earth. If evolution were true, earth would be teeming with new species.
- The common field mouse (a rodent created 100 million years ago) has more DNA in common with humans than Chimps do. Mouse – 99%, Chimp – 97%. DNA commonality among different species only proves a common Creator, not evolutionary relationship.